

# Planting in the Waimakariri Zone

Plant communities vary across the Waimakariri Zone. These communities reflect site variables such as soil type, depth and parent material, altitude, rainfall, temperature extremes, aspect and topography.

Wetland communities are found on waterlogged or seasonally saturated soils, shrubland/woodlands tend to be found on the drier drought prone or frequently disturbed soils and forests on deeper soils or in areas where rainfall is higher. The riparian area describes the area of interaction between the terrestrial habitat and the aquatic habitat. The riparian zone is found alongside waterways and water bodies.

Shrublands are often a mosaic of different plant communities — this is reflected in the lists provided below.

This map is a guide to composition for planting in your area.

All plantings should follow the principles of eco-sourcing in the first instance – all plants should be grown from seed that has been collected in a sustainable manner from wild stock (not from planted plants). The appropriate source Eco-Districts are indicated on the attached map. The seed for your planting must be collected within the Eco-District within which the planting is occurring.

Further information:

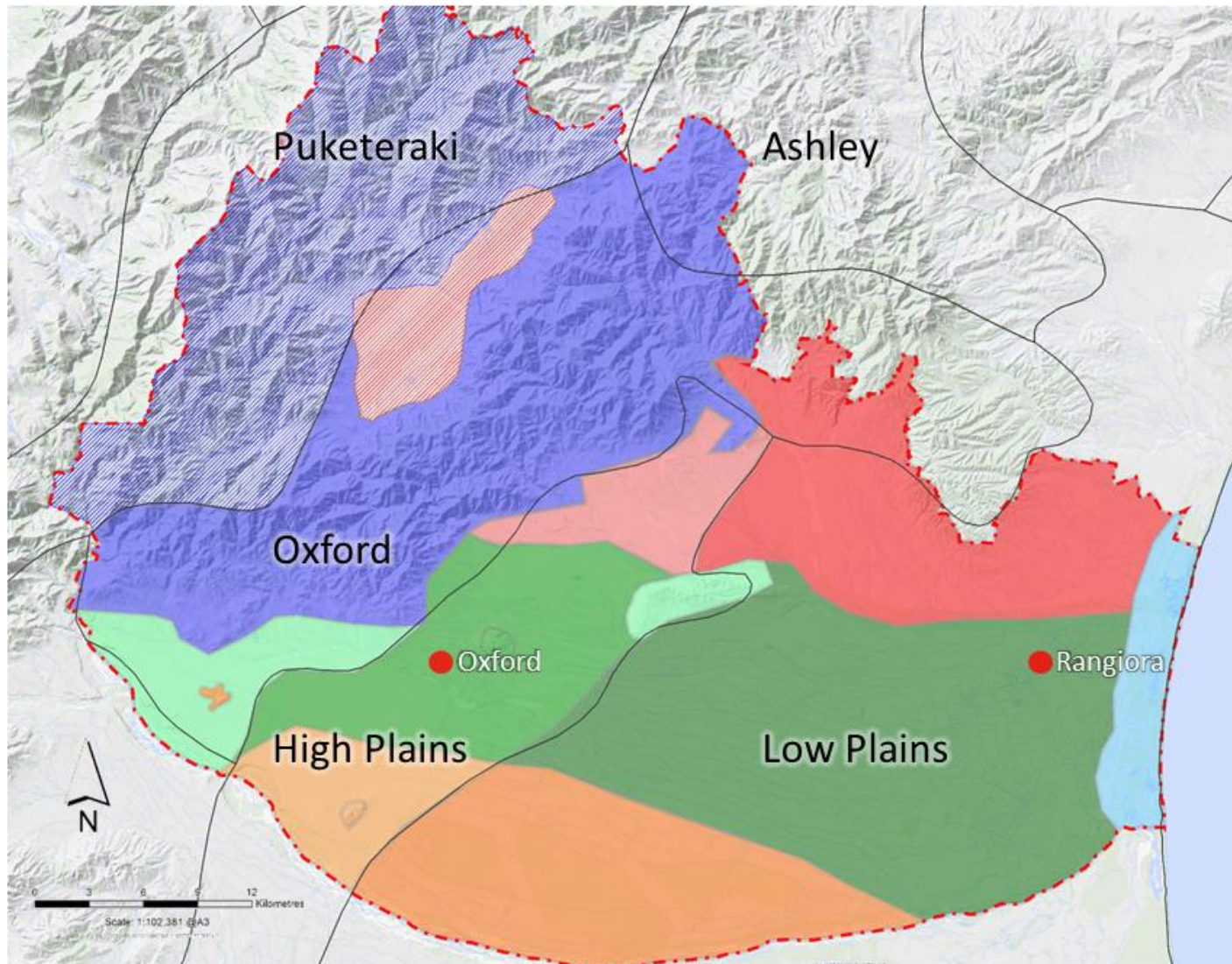
Ecosourcing Code of Practice and Ethics, Auckland Council — Chris Firkins, 2005

Native Forest Restoration: A Practical Guide for Landowners, QEII Trust — Tim Porteous, 1993

The Propagation of New Zealand Native Plants — Lawrie Metcalf, 1995

Wetland Restoration. A Handbook for New Zealand Freshwater Systems — Monica Peters and Beverley Clarkson, 2012

# Planting Zones for the Waimakariri District



## Legend

- Waimakariri Zone
- Rangiora
- Starvation Hill
- View Hill
- Foot Hills
- Sefton - Loburn
- Birch Hill
- Eyrewell
- Burnt Hill
- Coastal
- Lees Valley West Hills
- Lees Valley
- Ecological Districts

# Rangiora

Forest	Riparian	wetter	drier	Wetland	wetter	drier
<i>Aristotelia serrata</i> <b>makomako</b>	<i>Astelia fragrans</i> <b>kakaha</b>		✓	<i>Astelia grandis</i> <b>kakaha</b>		✓
<i>Carpodetus serratus</i> <b>putaputawētā</b>	<i>Austroderia richardii</i> <b>toetoe</b>	✓		<i>Austroderia richardii</i> <b>toetoe</b>		✓
<i>Coprosma linariifolia</i> <b>karamū</b>	<i>Carex dipsacea</i> <b>teasel sedge</b>	✓		<i>Carex coriacea</i> <b>rautahi</b>		✓
<i>Coprosma lucida</i> <b>karamū</b>	<i>Carex geminata</i> <b>rautahi</b>	✓		<i>Carex geminata</i> <b>rautahi</b>	✓	
<i>Coprosma robusta</i> <b>karamū</b>	<i>Carex maorica</i>	✓		<i>Carex maorica</i>	✓	
<i>Cordyline australis</i> <b>tī kōuka; cabbage tree</b>	<i>Carex secta</i> <b>pūrei</b>	✓		<i>Carex secta</i> <b>pūrei</b>	✓	
<i>Dacrycarpus dacrydioides</i> <b>kahikatea</b>	<i>Carex virgata</i> <b>pūrei</b>	✓		<i>Carex virgata</i> <b>pūrei</b>	✓	
<i>Elaeocarpus hookerianus</i> <b>pōkākā</b>	<i>Coprosma propinqua</i> <b>mikimiki</b>		✓	<i>Dacrycarpus dacrydioides</i> <b>kahikatea</b>		✓
<i>Griselinia littoralis</i> <b>kāpuka</b>	<i>Coprosma robusta</i> <b>karamū</b>		✓	<i>Eleocharis acuta</i> <b>spike sedge</b>	✓	
<i>Hoheria angustifolia</i> <b>houhi</b>	<i>Cordyline australis</i> <b>tī kōuka; cabbage tree</b>		✓	<i>Juncus edgariae</i> <b>wīwī</b>	✓	
<i>Lophomyrtus obcordata</i> <b>rōhutu</b>	<i>Dacrycarpus dacrydioides</i> <b>kahikatea</b>		✓	<i>Juncus pallidus</i> <b>wīwī</b>	✓	
<i>Melicope simplex</i> <b>poataniwha</b>	<i>Elaeocarpus hookerianus</i> <b>pōkākā</b>		✓	<i>Juncus sarophorus</i> <b>wīwī</b>	✓	

# Rangiora

Forest	Riparian	wetter	drier	Wetland	wetter	drier
<i>Myrsine australis</i> <b>māpou</b>	<i>Phormium tenax</i> <b>harakeke; flax</b>		✓	<i>Phormium tenax</i> <b>harakeke; flax</b>		✓
<i>Pennantia corymbosa</i> <b>kaikōmako</b>	<i>Melicope simplex</i> <b>poataniwha</b>		✓	<i>Typha orientalis</i> <b>raupō</b>	✓	
<i>Pittosporum eugenioides</i> <b>tarata</b>	<i>Schoenus pauciflorus</i> <b>bog rush</b>	✓				
<i>Pittosporum tenuifolium</i> <b>kōhūhū</b>	<i>Veronica salicifolia</i> <b>koromiko</b>		✓			
<i>Plagianthus regius</i> <b>mānatu</b>						
<i>Podocarpus totara</i> <b>tōtara</b>						
<i>Prumnopitys taxifolia</i> <b>mataī</b>						
<i>Pseudopanax arboreus</i> <b>whauwhaupaku; five-finger</b>						
<i>Pseudopanax crassifolius</i> <b>horoeka; lancewood</b>						
<i>Sophora microphylla</i> <b>kowhai</b>						
<i>Streblus heterophyllus</i> <b>tūrepo</b>						

## Starvation Hill

Forest	Riparian	wetter	drier	Wetland	wetter	drier
<i>Aristotelia serrata</i> <b>makomako</b>	<i>Astelia fragrans</i> <b>kakaha</b>		✓	<i>Austroderia richardii</i> <b>toetoe</b>		✓
<i>Carpodetus serratus</i> <b>putaputawētā</b>	<i>Austroderia richardii</i> <b>toetoe</b>		✓	<i>Carex coriacea</i> <b>rautahi</b>		✓
<i>Coprosma linariifolia</i> <b>karamū</b>	<i>Carex dipsacea</i> <b>teasel sedge</b>	✓		<i>Carex geminata</i> <b>rautahi</b>	✓	
<i>Coprosma lucida</i> <b>karamū</b>	<i>Carex geminata</i> <b>rautahi</b>	✓		<i>Carex secta</i> <b>pūrei</b>	✓	
<i>Coprosma robusta</i> <b>karamū</b>	<i>Carex maorica</i>	✓		<i>Carex virgata</i> <b>pūrei</b>	✓	
<i>Cordyline australis</i> <b>tī kōuka; cabbage tree</b>	<i>Carex secta</i> <b>pūrei</b>	✓		<i>Dacrycarpus dacrydioides</i> <b>kahikatea</b>		✓
<i>Dacrycarpus dacrydioides</i> <b>kahikatea</b>	<i>Carex virgata</i> <b>pūrei</b>	✓		<i>Eleocharis acuta</i> <b>spike sedge</b>	✓	
<i>Elaeocarpus hookerianus</i> <b>pōkākā</b>	<i>Coprosma propinqua</i> <b>mikimiki</b>		✓	<i>Juncus edgariae</i> <b>wīwī</b>	✓	
<i>Griselinia littoralis</i> <b>kāpuka</b>	<i>Coprosma robusta</i> <b>karamū</b>		✓	<i>Machaerina rubiginosa</i> <b>baumea</b>	✓	
<i>Hoheria angustifolia</i> <b>houhi</b>	<i>Cordyline australis</i> <b>tī kōuka; cabbage tree</b>		✓	<i>Phormium tenax</i> <b>harakeke; flax</b>		✓
<i>Lophomyrtus obcordata</i> <b>rohutū</b>	<i>Dacrycarpus dacrydioides</i> <b>kahikatea</b>		✓	<i>Schoenus pauciflorus</i> <b>bog rush</b>	✓	
<i>Melicope simplex</i> <b>poataniwha</b>	<i>Elaeocarpus hookerianus</i> <b>pōkākā</b>		✓	<i>Typha orientalis</i> <b>raupō</b>	✓	

# Starvation Hill

Forest	Riparian	wetter	drier	Wetland	wetter	drier
<i>Myrsine australis</i> <b>māpou</b>	<i>Schoenus pauciflorus</i> <b>bog rush</b>	✓				
<i>Pennantia corymbosa</i> <b>kaikōmako</b>	<i>Veronica salicifolia</i> <b>koromiko</b>		✓			
<i>Pittosporum eugenioides</i> <b>tarata</b>						
<i>Pittosporum tenuifolium</i> <b>kōhūhū</b>						
<i>Plagianthus regius</i> <b>mānatu</b>						
<i>Podocarpus totara</i> <b>tōtara</b>						
<i>Prumnopitys taxifolia</i> <b>mataī</b>						
<i>Pseudopanax arboreus</i> <b>whauwhaupaku</b>						
<i>Pseudopanax crassifolius</i> <b>horoeke</b>						
<i>Sophora microphylla</i> <b>kowhai</b>						

## Starvation Hill

---

Shrubland mosaic	Shrubland	Grassland	Woodland
<i>Carmichaelia australis</i> <b>mākaka</b>	4%	3%	3%
<i>Coprosma intertexta</i> <b>mikimiki</b>	4%	2%	2%
<i>Coprosma propinqua</i> <b>mikimiki</b>	20%	0%	3%
<i>Corokia cotoneaster</i> <b>korokio</b>	6%	0%	5%
<i>Discaria toumatou</i> <b>tūmatakuru; matagouri</b>	30%	2%	2%
<i>Poa cita</i> <b>wī; silver tussock</b>	4%	45%	0%
<i>Festuca novae zelandiae</i> <b>hard tussock</b>	3%	40%	0%
<i>Kunzea serotina</i> <b>kānuka</b>	9%	0%	81%
<i>Melicytus alpinus</i> <b>porcupine shrub</b>	5%	8%	4%
<i>Ozothamnus leptophylla</i> <b>tauhinu</b>	15%	0%	0%

## View Hill

Forest	Riparian	wetter	drier	Wetland	wetter	drier
<i>Coprosma linariifolia</i> <b>karamū</b>	<i>Austroderia richardii</i> <b>toetoe</b>		✓	<i>Austroderia richardii</i> <b>toetoe</b>		✓
<i>Coprosma lucida</i> <b>karamū</b>	<i>Carex geminata</i> <b>rautahi</b>	✓		<i>Carex coriacea</i> <b>rautahi</b>		✓
<i>Coprosma obconica</i>	<i>Carex maorica</i>	✓		<i>Carex geminata</i> <b>rautahi</b>	✓	
<i>Coprosma pedicillata</i>	<i>Carex secta</i> <b>pūrei</b>	✓		<i>Carex secta</i> <b>pūrei</b>	✓	
<i>Coprosma robusta</i> <b>karamū</b>	<i>Coprosma dumosa</i> <b>mikimiki</b>		✓	<i>Chionochloa rubra</i> subsp. <i>rubra</i> var. <i>rubra</i> <b>wī kura; red tussock</b>		✓
<i>Cordyline australis</i> <b>tī kōuka; cabbage tree</b>	<i>Coprosma propinqua</i> <b>mikimiki</b>		✓	<i>Chionochloa rubra</i> subsp. <i>cuprea</i> <b>wī kura; red tussock</b>		✓
<i>Dacrydium dacrydioides</i> <b>kahikatea</b>	<i>Coprosma rigida</i> <b>mikimiki</b>		✓	<i>Coprosma dumosa</i> <b>mikimiki</b>		✓
<i>Fuscospora solandri</i> <b>tawai; black beech</b>	<i>Cordyline australis</i> <b>tī kōuka; cabbage tree</b>		✓	<i>Coprosma rigida</i> <b>mikimiki</b>		✓
<i>Griselinia littoralis</i> <b>kāpuka</b>	<i>Dacrycarpus dacrydioides</i> <b>kahikatea</b>		✓	<i>Dacrycarpus dacrydioides</i> <b>kahikatea</b>		✓
<i>Hoheria angustifolia</i> <b>houhi</b>	<i>Elaeocarpus hookerianus</i> <b>pōkākā</b>		✓	<i>Olearia bullata</i>		✓
<i>Lophomyrtus obcordata</i> <b>rohutū</b>	<i>Olearia bullata</i>		✓	<i>Phormium tenax</i> <b>harakeke; flax</b>		✓
<i>Pennantia corymbosa</i> <b>kaikōmako</b>	<i>Phormium tenax</i> <b>harakeke; flax</b>		✓	<i>Schoenus pauciflorus</i> <b>bog rush</b>	✓	



## View Hill

Forest	Riparian	wetter	drier	Wetland	wetter	drier
<i>Pittosporum tenuifolium</i> <b>kōhūhū</b>	<i>Schoenus pauciflorus</i> <b>bog rush</b>	✓		<i>Typha orientalis</i> <b>raupō</b>	✓	
<i>Podocarpus totara</i> <b>tōtara</b>	<i>Veronica salicifolia</i> <b>koromiko</b>		✓			
<i>Prumnopitys taxifolia</i> <b>mataī</b>						
<i>Pseudopanax ferox</i> <b>fierce lancewood</b>						
<i>Raukaua anomalus</i>						
<i>Sophora microphylla</i> <b>kowhai</b>						

## Foot Hills

Forest	Riparian	wetter	drier	Wetland	wetter	drier
<i>Aristotelia serrata</i> <b>makomako</b>	<i>Austroderia richardii</i> <b>toetoe</b>	✓		<i>Austroderia richardii</i> <b>toetoe</b>		✓
<i>Carpodetus serratus</i> <b>putaputawētā</b>	<i>Carex secta</i> <b>pūrei</b>	✓		<i>Carex secta</i> <b>pūrei</b>	✓	
<i>Coprosma linariifolia</i> <b>karamū</b>	<i>Coprosma dumosa</i> <b>mikimiki</b>		✓	<i>Carex tenuiculmis</i>	✓	
<i>Coprosma lucida</i> <b>karamū</b>	<i>Coprosma propinqua</i> <b>mikimiki</b>		✓	<i>Chionochloa rubra</i> subsp. <i>rubra</i> var. <i>rubra</i> <b>wī kura; red tussock</b>		✓
<i>Coprosma robusta</i> <b>karamū</b>	<i>Coprosma rigida</i> <b>mikimiki</b>		✓	<i>Chionochloa rubra</i> subsp. <i>cuprea</i> <b>wī kura; red tussock</b>		✓
<i>Cordyline australis</i> <b>tī kōuka; cabbage tree</b>	<i>Coprosma rugosa</i> <b>mikimiki</b>		✓	<i>Coprosma dumosa</i> <b>mikimiki</b>		✓
<i>Dacrydium cupressinum</i> <b>rimu</b>	<i>Cordyline australis</i> <b>tī kōuka; cabbage tree</b>		✓	<i>Coprosma propinqua</i> <b>mikimiki</b>		✓
<i>Dacrydium dacrydioides</i> <b>kahikatea</b>	<i>Elaeocarpus hookerianus</i> <b>pōkākā</b>		✓	<i>Coprosma rigida</i> <b>mikimiki</b>		✓
<i>Elaeocarpus hookerianus</i> <b>pōkākā</b>	<i>Olearia bullata</i>		✓	<i>Olearia bullata</i>		✓
<i>Fuscospora cliffortioides</i> <b>tawai; mountain beech</b>	<i>Phormium tenax</i> <b>harakeke; flax</b>		✓	<i>Phormium tenax</i> <b>harakeke; flax</b>		✓
<i>Fuchsia excorticata</i> <b>kōtukutuku</b>	<i>Schoenus pauciflorus</i> <b>bog rush</b>	✓		<i>Schoenus pauciflorus</i> <b>bog rush</b>	✓	
<i>Griselinia littoralis</i> <b>kāpuka; broadleaf</b>	<i>Veronica salicifolia</i> <b>koromiko</b>		✓			

## Foot Hills

Forest	Riparian	wetter	drier	Wetland	wetter	drier
<i>Hoheria lyallii</i> <b>houhi</b>	<i>Veronica traversii</i>		✓			
<i>Lophomyrtus obcordata</i> <b>rōhutu</b>						
<i>Olearia arborescens</i> <b>pekapeka</b>						
<i>Olearia avicenniifolia</i> <b>akeake</b>						
<i>Olearia paniculata</i> <b>akiraho</b>						
<i>Pittosporum tenuifolium</i> <b>kōhūhū</b>						
<i>Podocarpus laetus</i> <b>Hall's tōtara</b>						
<i>Prumnopitys ferruginea</i> <b>miro</b>						
<i>Prumnopitys taxifolia</i> <b>mataī</b>						
<i>Pseudopanax arboreus</i> <b>whauwhaupaku; five-finger</b>						
<i>Pseudopanax crassifolius</i> <b>horoeka; lancewood</b>						
<i>Raukaua anomalus</i>						

## Sefton - Loburn

Forest	Riparian	wetter	drier	Wetland	wetter	drier
<i>Aristolelia serrata</i> <b>makomako</b>	<i>Astelia fragrans</i> <b>kakaha</b>		✓	<i>Apodasmia similis*</i> <b>oioi</b>	✓	
<i>Coprosma linariifolia</i> <b>karamū</b>	<i>Austroderia richardii</i> <b>toetoe</b>	✓		<i>Austroderia richardii</i> <b>toetoe</b>		✓
<i>Cordyline australis</i> <b>tī kōuka; cabbage tree</b>	<i>Carex geminata</i> <b>rautahi</b>	✓		<i>Carex coriacea</i> <b>rautahi</b>		✓
<i>Dacrycarpus dacrydioides</i> <b>kahikatea</b>	<i>Carex maorica</i>	✓		<i>Carex geminata</i> <b>rautahi</b>	✓	
<i>Griselinia littoralis</i> <b>kāpuka; broadleaf</b>	<i>Carex secta</i> <b>pūrei</b>	✓		<i>Carex secta</i> <b>pūrei</b>	✓	
<i>Hoheria angustifolia</i> <b>houhi</b>	<i>Carex virgata</i> <b>pūrei</b>	✓		<i>Carex virgata</i> <b>pūrei</b>	✓	
<i>Lophomyrtus obcordata</i> <b>rohutū</b>	<i>Coprosma crassifolia</i> <b>mikimiki</b>		✓	<i>Dacrycarpus dacrydioides</i> <b>kahikatea</b>		✓
<i>Myrsine australis</i> <b>māpou</b>	<i>Coprosma propinqua</i> <b>mikimiki</b>		✓	<i>Eleocharis acuta</i> <b>spike sedge</b>	✓	
<i>Pittosporum eugenioides</i> <b>tarata; lemonwood</b>	<i>Coprosma robusta</i> <b>karamū</b>		✓	<i>Juncus edgariae</i> <b>wīwī</b>	✓	
<i>Pittosporum tenuifolium</i> <b>kōhūhū</b>	<i>Cordyline australis</i> <b>tī kōuka; cabbage tree</b>		✓	<i>Juncus pallidus</i> <b>wīwī</b>	✓	
<i>Plagianthus regius</i> <b>mānatu</b>	<i>Dacrycarpus dacrydioides</i> <b>kahikatea</b>		✓	<i>Juncus sarophorus</i> <b>wīwī</b>	✓	
<i>Podocarpus totara</i> <b>tōtara</b>	<i>Elaeocarpus hookerianus</i> <b>pōkākā</b>		✓	<i>Lepidosperma australe</i> <b>four square</b>	✓	

## Sefton - Loburn

Forest	Riparian	wetter	drier	Wetland	wetter	drier
<i>Prumnopitys taxifolia</i> <b>mataī</b>	<i>Phormium tenax</i> <b>harakeke; flax</b>		✓	<i>Machaerina rubiginosa</i> <b>baumea</b>	✓	
<i>Pseudopanax arboreus</i> <b>whauwhaupaku; five-finger</b>	<i>Melicope simplex</i> <b>poataniwha</b>		✓	<i>Phormium tenax</i> <b>harakeke; flax</b>		✓
<i>Pseudopanax crassifolius</i> <b>horoeaka; lancewood</b>	<i>Pittosporum tenuifolium</i> <b>kōhūhū</b>		✓	<i>Plagianthus divaricatus*</i> <b>mānatu</b>		✓
<i>Sophora microphylla</i> <b>kowhai</b>	<i>Schoenus pauciflorus</i> <b>bog rush</b>	✓		<i>Schoenoplectus tabernaemontani*</i> <b>kāpūngāwhā</b>	✓	
<i>Streblus heterophyllus</i> <b>tūrepo</b>	<i>Sophora microphylla</i> <b>kowhai</b>		✓	<i>Schoenus pauciflorus</i> <b>bog rush</b>	✓	
	<i>Veronica salicifolia</i> <b>koromiko</b>		✓	<i>Typha orientalis</i> <b>raupō</b>	✓	

\* These species should be planted at the coastal end of this zone.

## Birch Hill

Forest	Riparian	wetter	drier	Wetland	wetter	drier
<i>Coprosma linariifolia</i> <b>karamū</b>	<i>Astelia fragrans</i> <b>kakaha</b>		✓	<i>Austroderia richardii</i> <b>toetoe</b>		✓
<i>Coprosma lucida</i> <b>karamū</b>	<i>Austroderia richardii</i> <b>toetoe</b>	✓		<i>Carex coriacea</i> <b>rautahi</b>		✓
<i>Cordyline australis</i> <b>tī kōuka; cabbage tree</b>	<i>Carex geminata</i> <b>rautahi</b>	✓		<i>Carex geminata</i> <b>rautahi</b>	✓	
<i>Dacrycarpus dacrydioides</i> <b>kahikatea</b>	<i>Carex maorica</i>	✓		<i>Carex secta</i> <b>pūrei</b>	✓	
<i>Elaeocarpus hookerianus</i> <b>pōkākā</b>	<i>Carex secta</i> <b>pūrei</b>	✓		<i>Carex virgata</i> <b>pūrei</b>	✓	
<i>Fuscopora solandri</i> <b>tawai; black beech</b>	<i>Carex virgata</i> <b>pūrei</b>	✓		<i>Dacrycarpus dacrydioides</i> <b>kahikatea</b>		✓
<i>Griselinia littoralis</i> <b>kāpuka</b>	<i>Coprosma crassifolia</i> <b>mikimiki</b>		✓	<i>Eleocharis acuta</i> <b>spike sedge</b>	✓	
<i>Hoheria angustifolia</i> <b>houhi</b>	<i>Coprosma propinqua</i> <b>mikimiki</b>		✓	<i>Juncus edgariae</i> <b>wīwī</b>	✓	
<i>Lophomyrtus obcordata</i> <b>rōhutu</b>	<i>Coprosma robusta</i> <b>karamū</b>		✓	<i>Machaerina rubiginosa</i> <b>baumea</b>	✓	
<i>Melicope simplex</i> <b>poataniwha</b>	<i>Cordyline australis</i> <b>tī kōuka; cabbage tree</b>		✓	<i>Phormium tenax</i> <b>harakeke; flax</b>		✓
<i>Myrsine australis</i> <b>māpou</b>	<i>Dacrycarpus dacrydioides</i> <b>kahikatea</b>		✓	<i>Schoenus pauciflorus</i> <b>bog rush</b>	✓	
<i>Pittosporum eugenioides</i> <b>tarata; lemonwood</b>	<i>Elaeocarpus hookerianus</i> <b>pōkākā</b>		✓	<i>Typha orientalis</i> <b>raupō</b>	✓	

## Birch Hill

Forest	Riparian	wetter	drier	Wetland	wetter	drier
<i>Pittosporum tenuifolium</i> <b>kōhūhū</b>	<i>Phormium tenax</i> <b>harakeke; flax</b>		✓			
<i>Plagianthus regius</i> <b>mānatu</b>	<i>Pittosporum tenuifolium</i> <b>kōhūhū</b>		✓			
<i>Podocarpus totara</i> <b>tōtara</b>	<i>Schoenus pauciflorus</i> <b>bog rush</b>	✓				
<i>Prumnopitys taxifolia</i> <b>mataī</b>	<i>Veronica salicifolia</i> <b>koromiko</b>		✓			
<i>Pseudopanax arboreus</i> <b>whauwhaupaku</b>						
<i>Pseudopanax crassifolius</i> <b>horoeka; lancewood</b>						
<i>Sophora microphylla</i> <b>kowhai</b>						

## Eyrewell

Shrubland mosaic	Shrubland	Grassland	Woodland
<i>Aciphylla subflabellata</i> <b>taramea</b>	2%	5%	0%
<i>Carmichaelia australis</i> <b>mākaka</b>	4%	2%	1%
<i>Coprosma crassifolia</i> <b>mikimiki</b>	5%	0%	1%
<i>Coprosma intertexta</i> <b>mikimiki</b>	9%	2%	2%
<i>Coprosma propinqua</i> <b>mikimiki</b>	5%	0%	1%
<i>Coprosma rhamnoides</i>	0%	0%	3%
<i>Corokia cotoneaster</i> <b>korokio</b>	5%	1%	7%
<i>Discaria toumatou</i> <b>tūmatakuru; matagouri</b>	35%	8%	3%
<i>Poa cita</i> <b>wī; silver tussock</b>	3%	48%	0%
<i>Festuca novae zelandiae</i> <b>hard tussock</b>	3%	26%	0%
<i>Kunzea serotina</i> <b>kānuka</b>	4%	1%	78%
<i>Melicytus alpinus</i> <b>porcupine shrub</b>	10%	5%	4%



## Eyrewell

---

Shrubland mosaic	Shrubland	Grassland	Woodland
<i>Ozothamnus leptophyllus</i> tauhinu	15%	2%	0%

## Burnt Hill

Shrubland mosaic	Shrubland	Grassland	Woodland
<i>Aciphylla subflabellata</i> <b>taramea</b>	4%	5%	0%
<i>Carmichaelia australis</i> <b>mākaka</b>	6%	2%	0%
<i>Coprosma crassifolia</i> <b>mikimiki</b>	3%	0%	0%
<i>Coprosma intertexta</i> <b>mikimiki</b>	5%	0%	0%
<i>Coprosma propinqua</i> <b>mikimiki</b>	4%	0%	0%
<i>Coprosma rhamnoides</i>	0%	0%	3%
<i>Corokia cotoneaster</i> <b>korokio</b>	4%	1%	6%
<i>Discaria toumatou</i> <b>tūmatakuru; matagouri</b>	40%	10%	3%
<i>Poa cita</i> <b>wī; silver tussock</b>	4%	48%	0%
<i>Festuca novae zelandiae</i> <b>hard tussock</b>	3%	26%	0%
<i>Kunzea serotina</i> <b>kānuka</b>	4%	1%	85%
<i>Melicytus alpinus</i> <b>porcupine shrub</b>	8%	5%	3%

## Burnt Hill

---

Shrubland mosaic	Shrubland	Grassland	Woodland
<i>Olearia lineata</i> *	4%	0%	0%
<i>Ozothamnus leptophyllus</i> <b>tauhinu</b>	8%	2%	0%
<i>Sophora microphylla</i> <b>kowhai</b>	2%	0%	0%
<i>Sophora prostrata</i> * <b>prostrate kowhai</b>	1%	0%	0%

\* These species are best suited to hilly country.

## Coastal

Forest	Riparian	wetter	drier	Wetland	wetter	drier
<i>Coprosma robusta</i> <b>karamū</b>	<i>Apodasmia similis</i> <b>oioi</b>	✓		<i>Apodasmia similis</i> <b>oioi</b>	✓	
<i>Cordyline australis</i> <b>tī kōuka; cabbage tree</b>	<i>Astelia fragrans</i> <b>kakaha</b>		✓	<i>Austroderia richardii</i> <b>toetoe</b>		✓
<i>Dacrycarpus dacrydioides</i> <b>kahikatea</b>	<i>Austroderia richardii</i> <b>toetoe</b>	✓		<i>Bolboschoenus caldwellii</i>	✓	
<i>Dodonaea viscosa</i> * <b>akeake</b>	<i>Bolboschoenus caldwellii</i>	✓		<i>Carex coriacea</i> <b>rautahi</b>		✓
<i>Hoheria angustifolia</i> <b>houhi</b>	<i>Carex geminata</i> <b>rautahi</b>	✓		<i>Carex geminata</i> <b>rautahi</b>	✓	
<i>Myoporum laetum</i> * <b>ngaio</b>	<i>Carex maorica</i>	✓		<i>Carex maorica</i>	✓	
<i>Pittosporum eugenioides</i> <b>tarata</b>	<i>Carex secta</i> <b>pūrei</b>	✓		<i>Carex secta</i> <b>pūrei</b>	✓	
<i>Pittosporum tenuifolium</i> <b>kōhūhū</b>	<i>Carex virgata</i> <b>pūrei</b>	✓		<i>Carex virgata</i> <b>pūrei</b>	✓	
<i>Plagianthus regius</i> <b>mānatu</b>	<i>Coprosma propinqua</i> <b>mikimiki</b>		✓	<i>Dacrycarpus dacrydioides</i> <b>kahikatea</b>		✓
<i>Podocarpus totara</i> <b>tōtara</b>	<i>Cordyline australis</i> <b>tī kōuka; cabbage tree</b>		✓	<i>Eleocharis acuta</i> <b>spike sedge</b>	✓	
<i>Prumnopitys taxifolia</i> <b>mataī</b>	<i>Dacrycarpus dacrydioides</i> <b>kahikatea</b>		✓	<i>Juncus edgariae</i> <b>wīwī</b>	✓	
<i>Sophora microphylla</i> <b>kowhai</b>	<i>Eleocharis acuta</i> <b>spike sedge</b>	✓		<i>Juncus kraussii</i> subsp. <i>australiensis</i> <b>wīwī</b>	✓	

## Coastal

Forest	Riparian	wetter	drier	Wetland	wetter	drier
	<i>Elaeocarpus hookerianus</i> <b>pōkākā</b>		✓	<i>Juncus pallidus</i> <b>wīwī</b>	✓	
	<i>Juncus pallidus</i> <b>wīwī</b>	✓		<i>Juncus sarophorus</i> <b>wīwī</b>	✓	
	<i>Juncus edgariae</i> <b>wīwī</b>	✓		<i>Lepidosperma australe</i> <b>four square</b>	✓	
	<i>Juncus sarophorus</i> <b>wīwī</b>	✓		<i>Machaerina rubiginosa</i> <b>baumea</b>	✓	
	<i>Machaerina rubiginosa</i> <b>baumea</b>	✓		<i>Phormium tenax</i> <b>harakeke; flax</b>		✓
	<i>Phormium tenax</i> <b>harakeke; flax</b>		✓	<i>Plagianthus divaricatus</i> <b>mānatu</b>		✓
	<i>Plagianthus divaricatus</i> <b>mānatu</b>		✓	<i>Schoenoplectus tabernaemontani</i> <b>kāpūngāwhā</b>	✓	
	<i>Schoenus pauciflorus</i> <b>bog rush</b>	✓		<i>Schoenus pauciflorus</i> <b>bog rush</b>	✓	
	<i>Schoenoplectus tabernaemontani</i> <b>kāpūngāwhā</b>	✓		<i>Typha orientalis</i> <b>raupō</b>	✓	
	<i>Sophora microphylla</i> <b>kowhai</b>		✓			
	<i>Veronica salicifolia</i> <b>koromiko</b>		✓			

\* Frost tender — plant in spring or provide shelter.